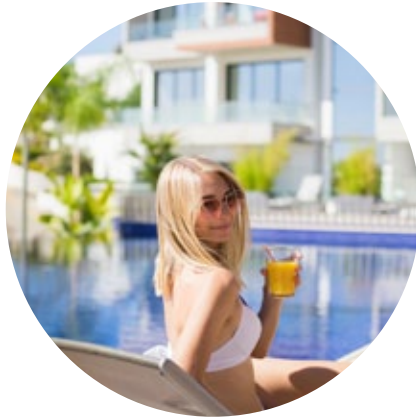
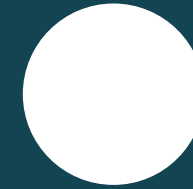




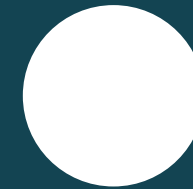
life



bbf:



there is no limit to life!



life

Architecturally, these one block apartments were inspired by a Mediterranean vibe which blends seamlessly with the natural beauty of the coastline

This project consists of twelve spacious apartments and two luxurious penthouses, that boast opulent living and dining spaces. Each apartment is curated with the best high-quality materials and high finish standards, where premium aesthetics fuse with elevated high spec functionality.



Residents will experience pleasing qualities with balance of colour, shape and movement, complimenting functionality with attractive layouts

Enjoy an ultimate dream home that boasts an open air swimming pool with carefully manicured gardens, overlooking a city of dreams. Luxurious penthouses offer beautifully designed private swimming pools with comfortable lounge roof terraces and stunning views of the dazzling city itself.



major benefits

- Contemporary residence in a tranquil residential area in Limassol tourist area;
- Stunning views of the dazzling city;
- 700 meters to golden sandy beaches and 5-star hotel Apollonia;
- Common swimming pool and gym;
- High ceilings (3.15 meters);

- High standards of finish;
- Under floor heating and central VRF conditioning;
- Penthouses with private roof terraces; and private swimming pools;
- Storage rooms;
- Private covered parking.



:location

A world of luxury, leisure and entertainment is nestled in a quiet neighbourhood of Germasogeia

From sports to active pursuits to culture and business, this is more than just a place to live! Here residences will have access to a Mediterranean resort at their doorsteps, from your personal well-being and fitness to recharging and revitalising, you will have it all. Germasogeia is well known for its glamour, from high class restaurants to five star hotels and from remarkable food stores to high end boutiques, Germasogeia has it all!



- 1 Limassol's Olympic Swimming Pool
- 2 Filippou Papadopoulos Pharmacy
- 3 The Garden Restaurant
- 4 Starbucks
- 5 Ocean Basket
- 6 Costa Coffee
- 7 Plus Discount Market
- 8 Cyprus Post Office
- 9 Christina Metaxa Pharmacy
- 10 Sigma Bakery
- 11 Pet Shop
- 12 Atlantica Miramare
- 13 The Royal Apollonia 5-star

• exterior



**700 meters away from
the golden sandy beaches
and 5-star hotel Apollonia**



• exterior



*All 3D images and photographs consist of indicative information and the project can differ insignificantly from the displayed images. Furniture and interior items are extras.

• exterior



**Contemporary residence
in a tranquil residential
area in Limassol tourist
area**



*All 3D images and photographs consist of indicative information and the project can differ insignificantly from the displayed images. Furniture and interior items are extras.

• exterior

**Penthouses with private
roof terraces and private
swimming pools**



• choice of properties



| UNIT N° | PROPERTY TYPE | BED-ROOMS | BATH-ROOMS | NO OF PARK SPACES | INDOOR AREA M ² | COV. VERANDA M ² | AUXILIARY AREA M ² | | PRIVATE POOL | UNCOVERED VERANDA M ² | STORAGE M ² | COMMON AREA M ² | TOTAL AREA M ² |
|-------------|---------------|-----------|------------|-------------------|----------------------------|-----------------------------|-------------------------------|----------------|--------------|----------------------------------|------------------------|----------------------------|---------------------------|
| | | | | | | | FLOOR | AREA | | | | | |
| A101 | Apartment | 1 | 1 | 1 | 61.70 | 13.24 | | | | | 2.50 | 13.66 | 91.10 |
| A102 | Apartment | 2 | 2 | 1 | 95.30 | 32.80 | | | | | 2.00 | 23.36 | 153.46 |
| A103 | Apartment | 2 | 2 | 1 | 91.04 | 23.26 | | | | | 2.00 | 20.84 | 137.14 |
| A104 | Apartment | 1 | 1 | 1 | 56.40 | 16.59 | | | | | 2.30 | 13.31 | 88.60 |
| A201 | Apartment | 1 | 1 | 1 | 61.70 | 13.24 | | | | | 2.60 | 13.66 | 91.20 |
| A202 | Apartment | 2 | 2 | 1 | 95.30 | 32.80 | | | | | 2.40 | 23.36 | 153.86 |
| A203 | Apartment | 2 | 2 | 1 | 93.70 | 23.20 | | | | | 2.60 | 21.32 | 140.82 |
| A204 | Apartment | 2 | 2 | 1 | 82.89 | 16.59 | | | | | 2.40 | 18.14 | 120.02 |
| A301 | Studio | Studio | 1 | 1 | 46.80 | 9.30 | | | | | 1.80 | 10.23 | 68.13 |
| A302 | Apartment | 3 | 2 | 1 | 112.60 | 32.80 | | | | | 4.00 | 26.51 | 175.91 |
| A303 | Apartment | 2 | 2 | 1 | 93.70 | 22.00 | | | | | 2.00 | 21.10 | 138.80 |
| A304 | Apartment | 2 | 2 | 1 | 82.89 | 16.59 | | | | | 2.30 | 18.14 | 119.92 |
| A401 | Penthouse | 3 | 3 | 1 | 124.20 | 32.75 | 5th | 46.70 | YES | 100.30 | 2.70 | 37.13 | 343.78 |
| A402 | Penthouse | 3 | 3 | 1 | 125.11 | 33.65 | 4th 5th | 26.80 49.90 | YES | 133.70 | 2.70 | 42.93 | 414.79 |

Note: the areas stated above may slightly differ upon issuance of relevant authority permits

• floor plans

Ground floor



• floor plans



1st floor

| UNIT N° | TOTAL AREA M ² |
|---------|---------------------------|
| 101 | 91.10 |
| 102 | 153.46 |
| 103 | 137.14 |
| 104 | 88.60 |



• floor plans



2nd floor

| UNIT N° | TOTAL AREA M ² |
|---------|---------------------------|
| 201 | 91.20 |
| 202 | 153.86 |
| 203 | 140.82 |
| 204 | 120.02 |

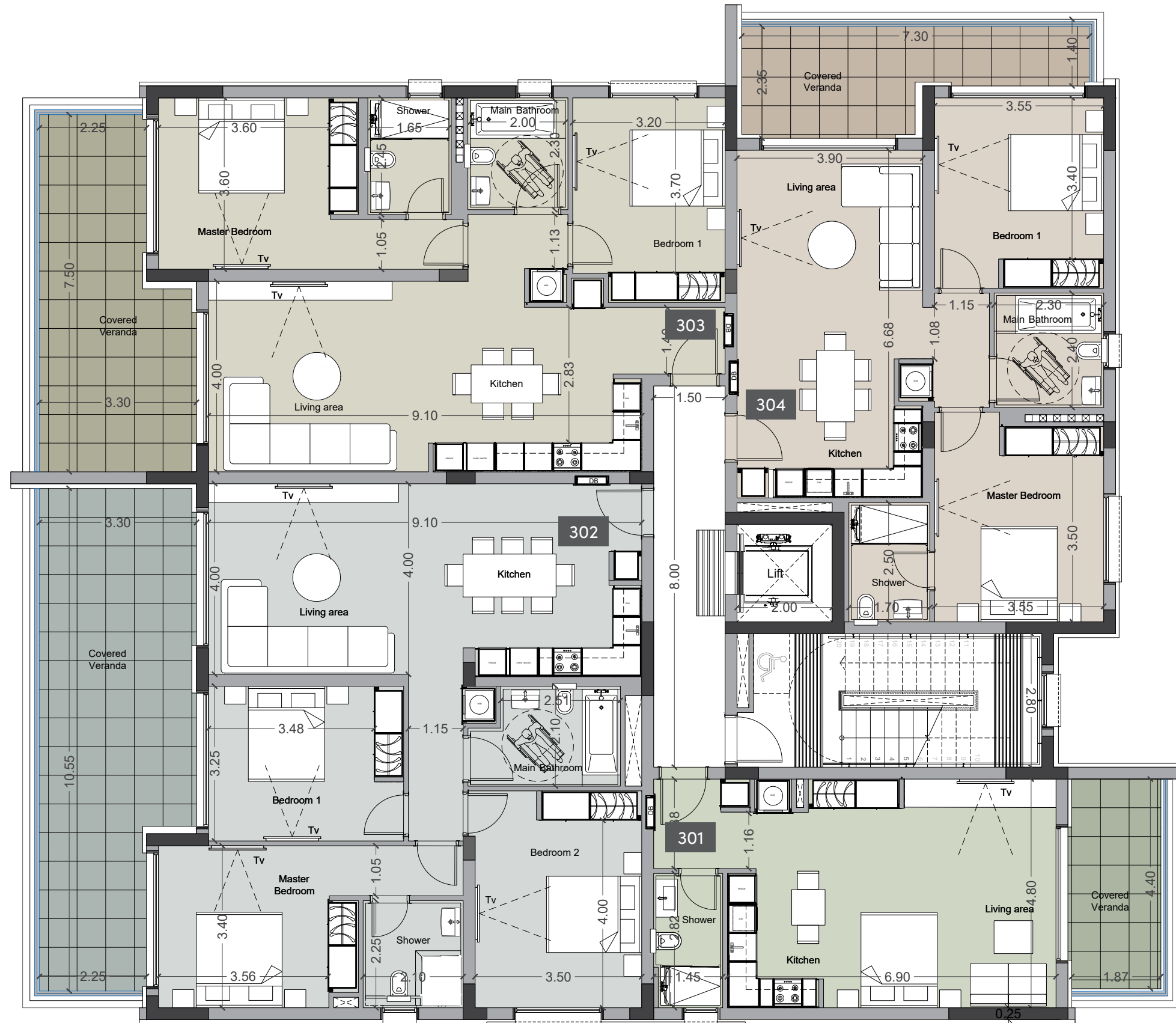


• floor plans



3rd floor

| UNIT N° | TOTAL AREA M ² |
|---------|---------------------------|
| 301 | 68.13 |
| 302 | 175.91 |
| 303 | 138.80 |
| 304 | 119.92 |



• floor plans



4th floor

| UNIT N° | TOTAL AREA M ² |
|---------|---------------------------|
| 401 | 343.78 |
| 402 | 414.79 |



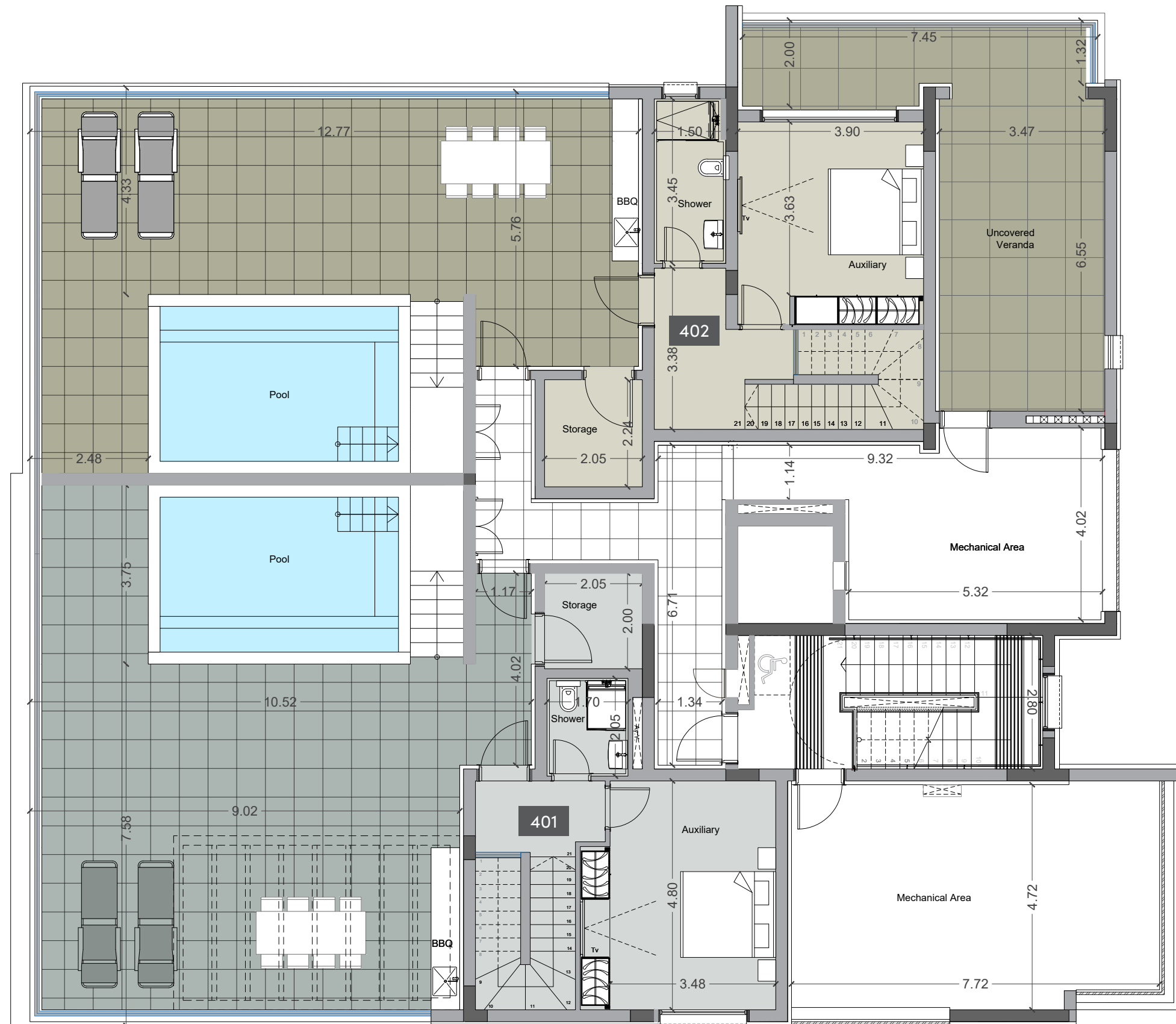
*Floor plans show approximate measurements only. The exact layout and sizes may vary

• floor plans



roof garden

| UNIT N° | TOTAL AREA M ² |
|---------|---------------------------|
| 401 | 103.87 |
| 402 | 98.43 |



• signature finishes

bbf:prime

Every property is delivered with signature top standard finishes:

- Fully completed finishings;
- Semi-solid parquet floors in each room;
- Marble floor and walls in the toilets and bathrooms;
- High ceilings (3.15 m);
- Security and fireproof entrance doors;
- Water heated floors;
- Air conditioning;
- High standard sanitary ware from European brands;
- Thermal aluminum window frames with double glazing;
- High standard kitchen cabinets;
- High standard wardrobes from European brands;
- Soft closers;
- Door stoppers.

Note: movable furniture, home appliances & interior items are extras



• signature finishes

bbf: penthouses

bbf® has reimagined the idea of what a penthouse should represent. The signature penthouses of bbf® are featured almost in all apartment developments and represent the best choice for a demanding and sophisticated customer who expects the best of comfort, style and privacy.

- Sizable roof space;
- Stone floors;
- Marble tiled swimming pool with Jacuzzi;
- Barbecue;
- Pergolas for shading.

NOTE: movable furniture, home appliances & interior items are extras



bbf: Head office

Head Office in Limassol

28 Ampelakion Street, Germasogeia,
4046 Limassol, P.O.Box 70649, Cyprus

Office: +357 25 315 318
info@bbf.com

bbf: Greece

Office in Athens

88 Vasilissis Sofias Avenue,
115 28 Athens, Greece

Office: +30 210 775 5388
greece@bbf.com



bbf.com